



Product Specification Sheet

Cat. #MA-20002

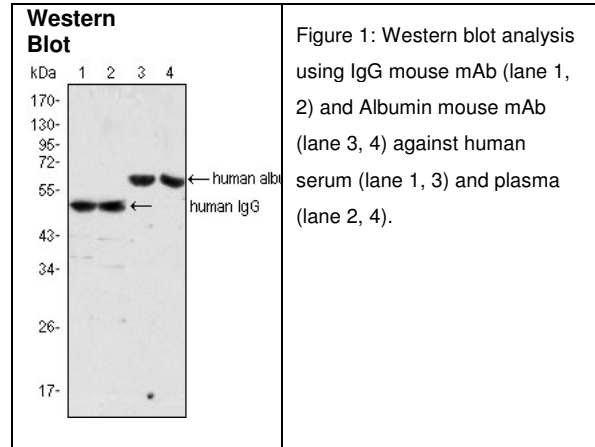
Mouse Monoclonal Anti-Human Immunoglobulin G (IgG) affinity pure

SIZE: 100 ul

Monoclonal anti-human IgG is derived from the hybridoma1 produced by the fusion of mouse myeloma cells and splenocytes from an immunized mouse. It is specific for the whole human IgG molecule, has no cross action with human IgM molecule as determined by an ELISA. Reactivity is observed with all human IgG subclasses but not with the Fab fragment of human IgG, the antibody site is located in the terminal end of human IgG (part of the Fab fragment), the Fc portion has various important functions such as complement fixation, site for rheumatoid factor.

Source of Antigen and Antibodies

Antigen	Human IgG was isolated from human sera and purified by chromatography.
Ab Host/type	Isotype: Mouse IgG1 Antibody has been purified by Protein A/G column chromatography.
2-Ab	Goat Anti-mouse IgG-HRP conjugate Cat # SA-40320 (AP, biotin, FITC conjugates also available))
-ve control IgG	Cat # SA-20008-1, Mouse (non-immune) Serum IgG, purified, suitable for ELISA, Western, IHC as -ve control



References: Roitt, I, et al "Immunology", Mosby, London, England, (1996) fourth edition. Vlug, A. et al "The structure and function of human IgG subclasses". Eur.Clin.Lab. 8, 26 (1989).

**All product are for In vitro research use only.*

Related material available from GSI

MA-20002

120320A

Isotype Controls

SA-20102-101 Mouse IgG1 isotype control, purified
 SA-20102-101-APC Mouse IgG1-APC conjugate (isotype)
 SA-20102-101-B Mouse IgG1-Biotin conjugate (isotype)
 SA-20102-101-F Mouse IgG1-FITC conjugate (isotype)
 SA-20102-101-FP Mouse IgG1-FITC-PE conjugate (isotype)
 SA-20102-101-HP Mouse IgG1-HRP conjugate (isotype)
 SA-20102-101-PC5 Mouse IgG1-PE-Cy5 conjugate (isotype)
 SA-20102-101-PE Mouse IgG1-PE conjugate (isotype control)

Suggested Dilutions:

Western blot	1:500– 1:2000
Immunohistochemistry (IHC):	N/A
Immunocytochemistry (ICC):	N/A
Flow cytometry (FCM):	N/A
ELISA	1:5000-1:10000

Form: Antibodies are supplied in PBS, pH 7.5, 0.05% azide and 0.1% BSA in liquid (0.5-1 mg/ml) or lyophilized in the same buffer. Reconstitute powder in 100 ul water or PBS. Store at -20oC or below is suitable size Aliquots.

Shipping: 4oC for solutions and room temp for powder.

6203 Wood Lake Center Dr., Bldg. 2, San Antonio, TX 78244, USA
Toll free (800) 344-5337; **Phone:** (210) 745-5988; **Fax** (210) 745-5992
Email: info@genemedsyn.com, **Website:** www.genemedsyn.com