



Product Specification Sheet

Cat. #MA-20003

Mouse Monoclonal Anti-Human BCL-10 (B Cell Lymphoma)

SIZE: 100 ul

Bcl-10 (B-cell CLL/lymphoma 10), also known as CLAP, Me10, CIPER, c-E10, CARMEN. Entrez Protein NP_003912. It is a protein containing a caspase recruitment domain (CARD). It plays an important role in apoptosis and activating NF-kappaB. The research suggested that it interacted with other CARD domain containing proteins including CARD9, 10, 11 and 14, which were thought to function as upstream regulators in NF-kappaB signaling. Bcl-10 is found to form a complex with MALT1 which encoded by another gene known to be translocated in MALT lymphoma. MALT1 and Bcl-10 are thought to synergize in the activation of NF-kappaB, and the deregulation of either of them may contribute to the same pathogenetic process that leads to the malignancy.

Source of Antigen and Antibodies

Antigen	Purified recombinant fragment of human BCL-10 expressed in E. Coli.
Ab Host/type	Balb/c mouse. Isotype: IgG1 Antibody has been purified by Protein A/G column chromatography.
2-Ab	Goat Anti-mouse IgG-HRP conjugate Cat # SA-40320 (AP, biotin, FITC conjugates also available)
-ve control IgG	Cat # SA-20008-1, Mouse (non-immune) Serum IgG, purified, suitable for ELISA, Western, IHC as -ve control

Isotype Controls

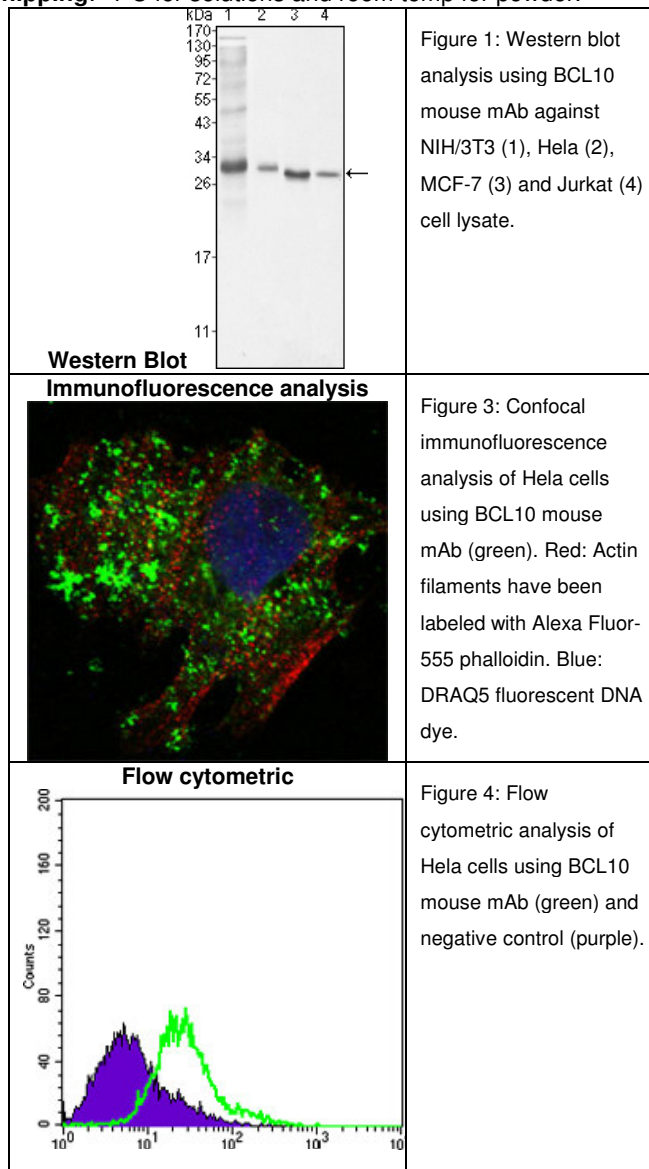
SA-20102-101 Mouse IgG1 isotype control, purified
 SA-20102-101-APC Mouse IgG1-APC conjugate (isotype)
 SA-20102-101-B Mouse IgG1-Biotin conjugate (isotype)
 SA-20102-101-F Mouse IgG1-FITC conjugate (isotype)
 SA-20102-101-FP Mouse IgG1-FITC-PE conjugate (isotype)
 SA-20102-101-HP Mouse IgG1-HRP conjugate (isotype)
 SA-20102-101-PC5 Mouse IgG1-PE-Cy5 conjugate (isotype)
 SA-20102-101-PE Mouse IgG1-PE conjugate (isotype control)

Suggested Dilutions:

Western blot	1:500– 1:2000
Immunohistochemistry (IHC):	1:200-:1:1000
Immunocytochemistry (ICC):	1:200–1:1000
Flow cytometry (FCM):	1/200-1/400
ELISA	1:5000-1:10000

Form: Antibodies are supplied in PBS, pH 7.5, 0.05% azide and 0.1% BSA in liquid (0.5-1 mg/ml) or lyophilized in the same buffer. Reconstitute powder in 100 ul water or PBS. Store at -20°C or below is suitable size Aliquots.

Shipping: 4°C for solutions and room temp for powder.



References:

Willis, T.G., et al. (1999) Cell. 96, 35-45. Lucas, P.C., et al. (2001) J. Biol.Chem. 276, 19012-19019. Wang, L., et al. (2001) J. Biol.Chem. 276, 21405-21409

**All product are for In vitro research use only.*

Related material available from GSI



GENEMED SYNTHESIS, INC.

MA-20003

120320A

6203 Wood Lake Center Dr., Bldg. 2, San Antonio, TX 78244, USA
Toll free (800) 344-5337; **Phone:** (210) 745-5988; **Fax** (210) 745-5992
Email: info@genemedsyn.com, **Website:** www.genemedsyn.com