



Product Specification Sheet

Cat. #MA-20009

Mouse Monoclonal Anti-Human Interferon- γ (IFN- γ) aff.pure

SIZE: 100 ul

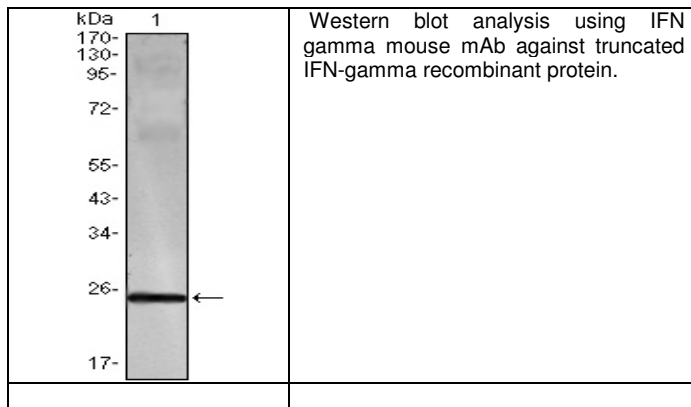
Interferon- γ (IFN- γ) is a pro-inflammatory cytokine that is central in host resistance to infection. It is mainly produced by natural killer cells and CD4+ and CD8+ T cells, its receptors are found on nearly all cells, where it activates diverse responses that enable potential host cells to prevent invasive infection by bacteria, parasites and viruses. Takayanagi et al. (2000) demonstrated that IFN- γ strongly suppresses osteoclastogenesis by interfering with the RANKL (602642)-RANK (603499) signaling pathway. Tsubota et al. (1999) reported that this upregulation in Sjogren syndrome patients may be controlled by interferon-gamma through the activation of transcription factor NFKB

same buffer. Reconstitute powder in 100 ul water or PBS. Store at -20°C or below in suitable size Aliquots.

Shipping: 4°C for solutions and room temp for powder.

Source of Antigen and Antibodies

Antigen	Purified recombinant fragment of human IFN- γ expressed in E. Coli.
Ab Host/type	Balb/c mouse. Isotype: IgG1 Purified antibody in PBS containing 0.03% sodium azide.
2-Ab	Goat Anti-mouse IgG-HRP conjugate Cat # SA-40320 (AP, biotin, FITC conjugates also available))
-ve control IgG	Cat # SA-20008-1, Mouse (non-immune) Serum IgG, purified, suitable for ELISA, Western, IHC as -ve control



References: Takayanagi, H. et al. Nature 2000. 408: 600-605.
Tsubota, K. et al. Invest. Ophthal. Vis. Sci. 40: 28-34, 1999.

**All products are for In vitro research use only.*

Related material available from GSI

Isotype Controls

SA-20102-101 Mouse IgG1 isotype control, purified
 SA-20102-101-APC Mouse IgG1-APC conjugate (isotype)
 SA-20102-101-B Mouse IgG1-Biotin conjugate (isotype)
 SA-20102-101-F Mouse IgG1-FITC conjugate (isotype)
 SA-20102-101-FP Mouse IgG1-FITC-PE conjugate (isotype)
 SA-20102-101-HP Mouse IgG1-HRP conjugate (isotype)
 SA-20102-101-PC5 Mouse IgG1-PE-Cy5 conjugate (isotype)
 SA-20102-101-PE Mouse IgG1-PE conjugate (isotype control)

MA-20009

120321A

Suggested Dilutions:

Western blot	1:500– 1:2000
Immunohistochemistry (IHC):	N/A
Immunocytochemistry (ICC):	N/A
Flow cytometry (FCM):	N/A
ELISA	1:5000-1:10000

Form: Antibodies are supplied in PBS, pH 7.5, 0.05% azide and 0.1% BSA in liquid (0.5-1 mg/ml) or lyophilized in the